



Write your name and the date, then use this space to complete one of the tasks on the Challenge Cards.

Name: _____

Date: _____

Challenge Card A B C



Write your name and the date, then use this space to complete one of the tasks on the Challenge Cards.

Name: _____

Date: _____

Challenge Card A B C

Name: _____

Date: _____



Write your name and the date, then use these spaces to complete two of the tasks on the Challenge Cards.

Challenge Card A B C

Challenge Card A B C

Name: _____

Date: _____



Write your name and the date, then use these spaces to complete all three of the tasks on the Challenge Cards.

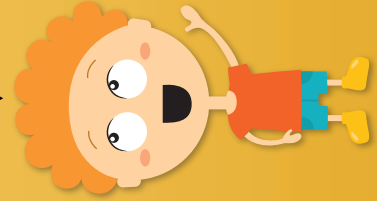
Challenge Card **A**

Challenge Card **B**

Challenge Card **C**

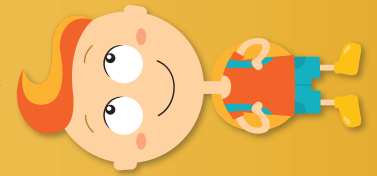
Challenge Card C

An important religious leader is visiting your local area! Design a flag for your school that everyone can wave when the visitor arrives. It should have symbols that mean something for you, your school and your local area.



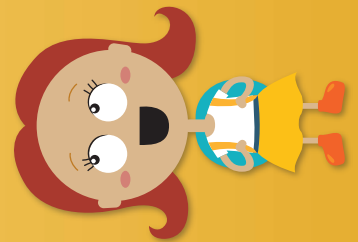
Challenge Card B

An important religious leader is visiting your local area! You have been asked to speak at a ceremony welcoming them to your school. Write a poem or a speech. Remember, you are representing your school! What will you say...



Challenge Card A

An important religious leader is visiting your local area! You have been asked to interview them for your school newsletter. Write at least five interview questions. You could try to find out how they help people, what their responsibilities are, or some interesting things they have done!



Name: _____

Date: _____



Make a portrait of a global religious leader such as the Dalai Lama, Pope Francis or the Archbishop of Canterbury. Before you start, think about the questions below.

Will they be sitting? Standing?

What will they be wearing?

What will their facial expression be?

What will be in the background?

Will there be any other objects or symbols in the portrait?



Make a portrait of a global religious leader such as the Dalai Lama, Pope Francis or the Archbishop of Canterbury. Before you start, think about the questions below.

Will they be sitting? Standing?

What will they be wearing?

What will their facial expression be?

What will be in the background?

Will there be any other objects or symbols in the portrait?



Make a portrait of a global religious leader such as the Dalai Lama, Pope Francis or the Archbishop of Canterbury. Before you start, think about the questions below.

Will they be sitting? Standing?

What will they be wearing?

What will their facial expression be?

What will be in the background?

Will there be any other objects or symbols in the portrait?



Make a portrait of a global religious leader such as the Dalai Lama, Pope Francis or the Archbishop of Canterbury. Before you start, think about the questions below.

Will they be sitting? Standing?

What will they be wearing?

What will their facial expression be?

What will be in the background?

Will there be any other objects or symbols in the portrait?