

1—How do I get to Bushey High Street?

Symbol: A symbol is a picture, shape, or thing that stands for something else.

A map is a picture of a place from above. Geographers use maps to show journeys.



We can create a map to show how to get from Merry Hill to Bushey high street.

What is a high street?

A high street is the main road in a town that has shops, restaurants and other places to visit.



2—How is the land used in my local area?

On the way to Bushey High Street there are physical

Human	Physical
 <p>Sorting Office</p>	 <p>Ashfield school field</p>
 <p>Ashfield Junior School</p>	 <p>Bushey golf club</p>
 <p>War Memorial</p>	

Some places on the high street are noisy and some are quiet.



Quiet



Noisy

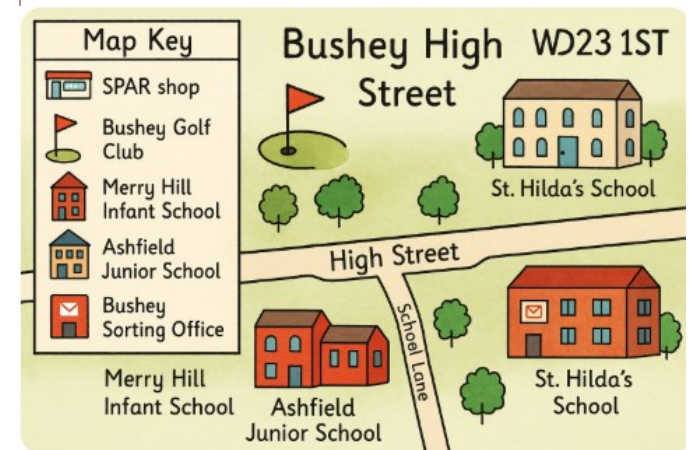
3 — What is it like on Bushey High Street?

Key: A key is a box on a map that explains what a symbol means.

What symbols could we see?



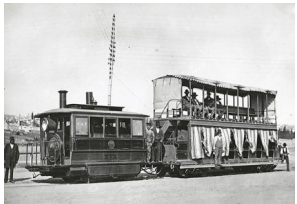
What could a key look like?



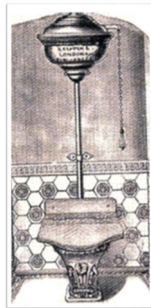
4— Is my local park wonderful?

Invention: An invention is something new that has never been created before.

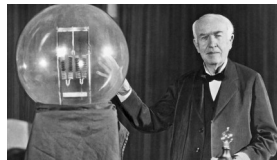
Victoria was the queen for 63 years. Lots of changes happened whilst she was Queen.



Trams



Flushing Toilet



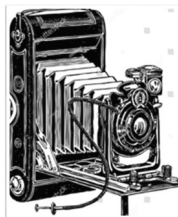
Light Bulbs



Underground trains



Cars



Photography

Schooling

- All children had to go to school.
- School became free for all children.
- Learning through play was introduced.



5 —Is my local park wonderful and how could it be improved?



Elizabeth was the queen for 70 years. She is the longest reigning monarch that means no one else has been a king or queen for as long as her.

Lots of changes happened whilst she was Queen.

How did people listen to music?



1963

Cassette tapes



1982

CD's



2006

Digital music e.g. Spotify

How did technology change?



Mobile phones were invented



Computers in our homes



The internet became available