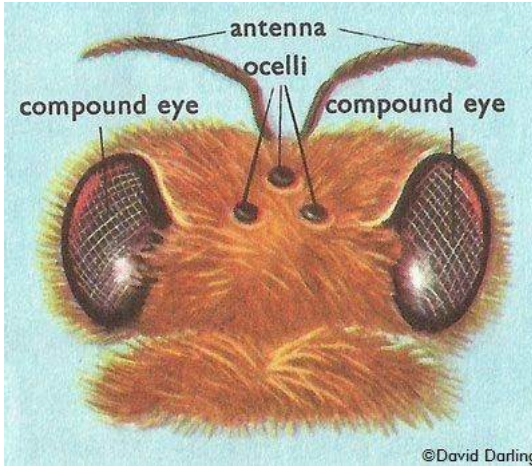


BEE FACTS * 01

Did you know?

Bees have 5 eyes.



* Bee has three 'ocelli' eyes on the top of its head. These detect light (but not shapes), meaning that a bee can sense if it is being approached from above by a predator.

* The two large eyes either side of its head are made up of lots tiny lenses that each piece together a wider image of what the bee can see - this is known as a compound eye. They specialise in seeing patterns, which can help identify plant types and other bees.

* The bees two larger eyes have tiny hairs growing on them. It is believed that the hairs detect wind direction, so they can navigate in windy conditions, how amazing is that.

Can you imagine having hairy eyes?

* As well as their hairy eyes, it is thought that bees also use the sun to navigate. They can see polarised light (light that has travelled through a filter, such as clouds), which means they can see the sun, even if it's very cloudy.

* A field of flowers that look still to us humans, look very different to our bees. They are able to see them swaying in the smallest breeze. That's because bees are very sensitive to movement.

* Bees can see some colours, though they have very different colour vision than humans. Their eyes are more sensitive to blue and purple. Bees can see ultraviolet light, which is advantageous as flowers reflect large amounts of ultraviolet light. This makes flowers look very bright against their surroundings and very appealing to a bee! It is thought that bees' favourite colours are purple, violet, and blue. This might explain why 'bee-friendly' flowers, such as lavender and forget-me-nots, tend to be these colours.

Bees have 6 legs.

* Bees have three pairs of legs - There are 2 at the front, 2 in the middle and 2 at the rear.

* A bees rear legs are equipped with special basket-like hairs for pollen collection. They also have a claw for manipulating objects, a tool for removing pollen from their antennae and a pollen press.

* A bee also has 6 knees. One on each of its legs.



Hope you enjoyed these fun facts, come back soon to see more. Maybe you could try and spot a bee with her big yellow baskets on her leg?

Lots of love
Mrs Bence x