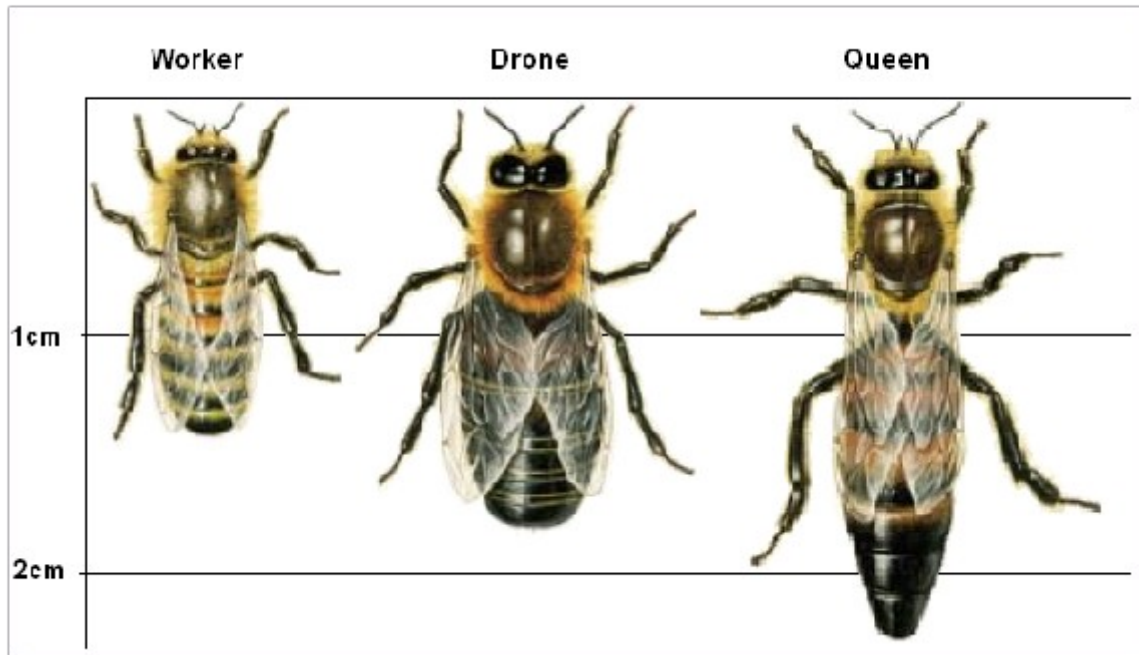


BEE FACTS * 02

Did you know?

The Bee family.

* Honey bees live in hives (or colonies). They have three different family members in the hives and they are: a Queen, Workers and Drones.



Drone Bees

- * A drone bee is a boy and he does not have a stinger so is unable to protect the hive.
- * He does not help gather nectar or pollen, he doesn't look after the brood or maintain the hive.
- * He doesn't collect food and relies on the worker bees to feed him.
- * The average life span of a drone can be from a couple of weeks to 90 days, but this depends on the weather.
- * All drones are kicked out from their hive by the worker bees at the end of summer or autumn. This is because food becomes more rare, there are lots of eggs to raise and seeing as they don't help much. They are told to leave.
- * Drones do help to keep the temperature in the hive correct, this is really important to help the young bees and larvae survive.



Queen Bees.

* A Queen bee is a girl. She is the most important bee in the hive. She is the mother to all the other bees that live in the collonie. Although she begins her life as any other larva, she is fed "royal jelly" to change her into a queen.



- * In the first picture this is a normal worker bee growing in a honeycomb cell, in the second picture is a Queen cell which is much bigger and hangs out of the honeycomb. She will hatch in around 15 days.
- * When a Queen is born, she will battle against any other Queen bees in the hive. It is a battle to the death and she will fight until she is the only Queen left alive.
- * The Queen bee has "royal helpers" in her hive, they will stay by her side, cleaning her and feeding her so that she can get on with laying her eggs.
- * A Queen bee can lay between 1500 and 2000 eggs per day!!
- * A Queen bee has an average lifespan of two to three years.

Can you spot the Queen in the picture??



Worker Bees.



- * Worker bees are all female and the only insects that produce food that is eaten by human beings.
- * A worker bee generally travels up to 6 miles at a speed of 15 mph searching for pollen and nectar.
- * A bee visits from 50 to 100 flowers during one single trip.
- * Worker bees have stingers. They use their stinger **only** when they are threatened because they die immediately afterwards.

* During the active season, the lifetime of a worker is five to six weeks. Overwintering worker bees may, however, live for four to six months.



- This is a hive I have where "Queen Phoe-bee" rules. Maybe you could try and spot a worker bee in your garden and give her a "Bee-utiful" name?

Lots of love
Mrs Bence x

